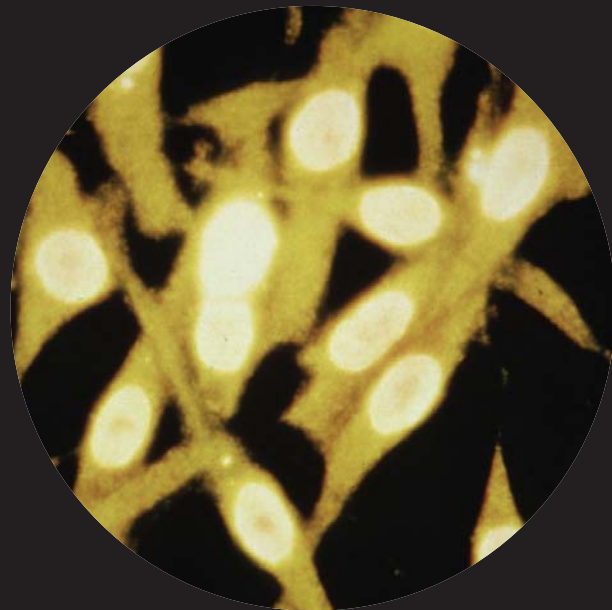
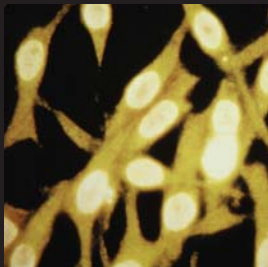


# Chlamydia



LEEDS Head Office  
PO Box 417  
Leeds LS1 5PN

Tel: 0113 244 4209  
Fax: 0113 245 8233

E-Mail:  
[leeds@mesmac.co.uk](mailto:leeds@mesmac.co.uk)

BRADFORD  
PO Box 267  
Bradford BD1 5XT

Tel: 01274 395 815  
Fax: 01274 306 815

E-Mail:  
[bradford@mesmac.co.uk](mailto:bradford@mesmac.co.uk)

WAKEFIELD  
PO Box 19  
Wakefield WF1 2YE

Tel: 01924 211 116  
Fax: 01924 216 111

E-Mail:  
[wakefield@mesmac.co.uk](mailto:wakefield@mesmac.co.uk)

YORK  
PO Box 549  
York YO30 7GX

Tel: 01904 620 400  
Fax: 01904 620 444

E-Mail:  
[northyorkshire@mesmac.co.uk](mailto:northyorkshire@mesmac.co.uk)

Yorkshire MESMAC  
SEXUAL HEALTH PROJECT

**This resource is for Lesbians, Gay men and Bisexuals. It aims to provide you with information about Chlamydia – its symptoms, treatment and prevention.**

## What is Chlamydia?

Chlamydia is the most common Sexually Transmitted Infection (STI) in the UK.

### How is Chlamydia passed on during sex between Men?

Chlamydia can be passed on through most forms of penetrative sex such as fucking and being fucked, sucking and being sucked, rimming, sharing sex toys, fingering and fisting.

### How is Chlamydia passed on during sex between Women?

As with men Chlamydia is mostly passed on through penetrative sex, so it can be transmitted via sex toys, fingers and hands (if you put them inside yourself and then inside your partner) and through oral sex.

### What are the symptoms of Chlamydia for men?

Symptoms of Chlamydia may appear one to three weeks after infection and can include; a milky discharge from the end of your cock (particularly in the morning) and pain when passing urine, it can also cause your balls to swell. If your arse is infected it can make your arse sore and again cause a discharge. It also can cause inflammation of the rectum and lining of the eye (conjunctivitis or “pink eye”). If left untreated Chlamydia can cause infertility and inflammation and swelling of the joints known as reactive arthritis. Over 50% of men have no symptoms.

### What are the symptoms of Chlamydia for women?

Symptoms of Chlamydia may appear one to three weeks after infection and can include for women; unusual vaginal discharge, the need to urinate more often, pain when urinating, pain in the pelvis or lower abdomen and irregular bleeding between periods. It also can cause inflammation of the rectum and lining of the eye (conjunctivitis or “pink eye”).

If left untreated Chlamydia can also spread to other reproductive organs causing Pelvic Inflammatory Disease (PID) this can lead to long term pain, infertility and pregnancy which occurs outside the womb (ectopic pregnancy). It can also cause inflammation and swelling of the joints known as reactive arthritis. 75% of women have no symptoms.

## How do you test for Chlamydia?

A sample of your urine is tested for Chlamydia. It is sent for testing at a Sexual Health Clinic.

### Who will know I've been tested?

If you are tested at a Sexual Health Clinic only the staff at the clinic will know, they will not tell your GP or anyone else without your written permission.

### How is Chlamydia treated?

Chlamydia is normally easily treated with a course of antibiotics.

### How is Chlamydia prevented?

Using a condom for anal, oral or vaginal sex is an effective way of avoiding infection with Chlamydia.

If you enjoy going down on your partner, using a dental dam, a cut up condom or cling film to cover the vagina and/or arse can help prevent transmission.

If you share toys with your partners put a condom over them. Remove it and replace it with a fresh one before using it on another person including yourself.

If you're into fingering and or fisting wearing a latex glove is an effective barrier against Chlamydia, it might also be a good idea not to share the same tub of lubricant.

Treatment for Chlamydia will not protect you from getting Chlamydia again.

If you want any more information about Chlamydia or any other STI you can contact Yorkshire MESMAC on 0113 244 4209 or look at our website [www.mesmac.co.uk](http://www.mesmac.co.uk)